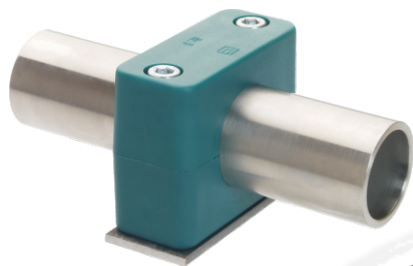


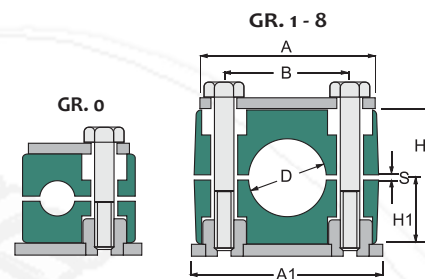
## A - light series

DIN 3015<sub>1</sub>



**CAP**

Material	Designation
P (polypropylene)	CAP
P (polypropylene) G	CAPG
N (polyamide)	CAN
N (polyamide) G	CANG
SA (santoprene)	CSA
AL (aluminium)	CAL

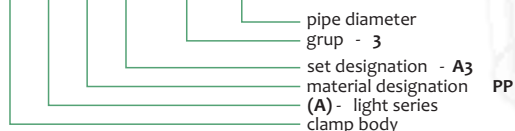


SET DESIGNATION - A		
<b>A - 1</b>	<b>A - 2</b>	<b>A - 3</b>
<b>A - 9</b>	<b>A - 10</b>	<b>A - 12</b>
<b>A - 14</b>	<b>A - 16</b>	<b>A - 18</b>

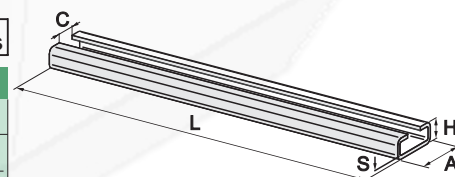
Group	Diameter Ø mm	Diameter Ø "	Designation	Dimensions mm						Screw	Rail nut TM
				A	A1	B	H	H1	S		
0	6	1/8	CAP - 006	28	30	27	13,5	0,4	M6x20 M6x30	M6	
	8		CAP - 008								
	10		CAP - 010								
	12		CAP - 012								
1	6	1/8	CAP - 106	34	36	20	27	13,5	0,4	M6x20 M6x30	M6
	8		CAP - 108								
	10		CAP - 110								
	12		CAP - 112								
2	13,5	1/4	CAP - 213,5	40	42	26	33	16,5	0,6	M6x25 M6x35	M6
	14		CAP - 214								
	15		CAP - 215								
	16		CAP - 216								
	17,2		CAP - 217,2								
	18		CAP - 218								
3	20	1/2	CAP - 320	48	50	33	35	17,2	0,6	M6x30 M6x40	M6
	21,3		CAP - 321,3								
	22		CAP - 322								
	23		CAP - 323								
	25		CAP - 325								
4	26,9	3/4	CAP - 426,9	57	59	40	42	21	0,6	M6x35 M6x45	M6
	28		CAP - 428								
	30		CAP - 430								
	32		CAP - 532								
5	33,7	1	CAP - 533,7	70	72	52	58	29	0,5	M6x50 M6x60	M6
	35		CAP - 535								
	38		CAP - 538								
	40		CAP - 540								
	42		CAP - 542								
	42,2		CAP - 542,2								
	45		CAP - 645								
6	48,3	1 1/2	CAP - 648,3	86	88	66	66	33	0,8	M6x60 M6x70	M6
	50		CAP - 650								
	52		CAP - 652								
	55		CAP - 655								
	60,3		CAP - 760,3								
7	76,1	2 1/2	CAP - 776,1	118	122	93	93	46	0,8	M8x85 M8x100	M8
	88,9	3	CAP - 888,9								
8	102		CAP - 8102	144	148	120	118	58	0,8	M8x115 M8x130	M8

### ORDERING EXAMPLE

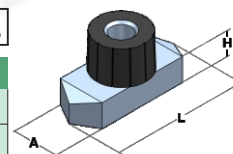
**CAP3-320**



C - Rail - TS						Light series		
Group	A	H	C	S	Length L	Material - Fe	Material - Zn	Material - INOX
0 - 8	28	11	11	2	2 m	TS - A 11 / Fe	TS - A 11 / Zn	TS - A 11 / V2A
0 - 8	28	14	11	2	2 m	TS - A 14 / Fe	TS - A 14 / Zn	TS - A 14 / V2A
0 - 8	28	30	11	2	2 m	TS - A 30 / Fe	TS - A 30 / Zn	TS - A 30 / V2A



Rail nut - TM						Light series		
Group	A	H	L	Thread	Material - Fe	Material - Zn	Material - INOX	
0 - 6	10,2	5,5	25,5	M 6	TM - A 6 / Fe	TM - A 6 / Zn	TM - A 6 / V2A	
7 - 8	10,4	5,5	25,5	M 8	TM - A 8 / Fe	TM - A 8 / Zn	TM - A 8 / V2A	



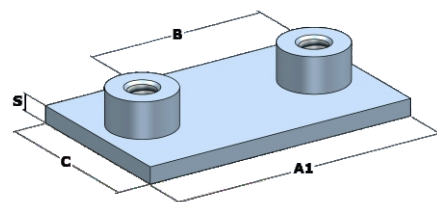
MATERIAL	
Fe	Raw - black
Zn	Zinc
Inox	Stainless steel
V2A	1.4401 (AISI 316)
V4A	1.4301 (AISI 304)

## A - light series

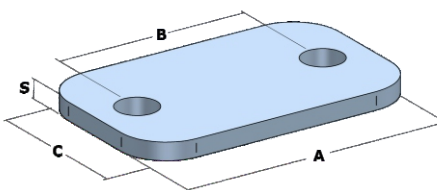
DIN 3015<sub>1</sub>

Components						Light series	
------------	--	--	--	--	--	--------------	--

Weld plate					AP - A		
Group	A1	B	C	S	Designation - Fe	Designation - INOX	
0	30	0	30	3	AP - A 0	AP - A 0 / V2A	
1	36	20	30	3	AP - A 1	AP - A 1 / V2A	
2	42	26	30	3	AP - A 2	AP - A 2 / V2A	
3	50	33	30	3	AP - A 3	AP - A 3 / V2A	
4	59	40	30	3	AP - A 4	AP - A 4 / V2A	
5	72	52	30	3	AP - A 5	AP - A 5 / V2A	
6	88	66	30	3	AP - A 6	AP - A 6 / V2A	
7	122	93	30	5	AP - A 7	AP - A 7 / V2A	
8	148	120	30	5	AP - A 8	AP - A 8 / V2A	

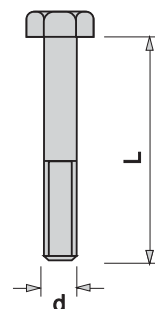


Cover plate					DP - A		
Group	A	B	C	S	Designation - Zn	Designation - INOX	
0	28	0	30	3	DP - A 0	DP - A 0 / V2A	
1	34	20	30	3	DP - A 1	DP - A 1 / V2A	
2	40	26	30	3	DP - A 2	DP - A 2 / V2A	
3	48	33	30	3	DP - A 3	DP - A 3 / V2A	
4	57	40	30	3	DP - A 4	DP - A 4 / V2A	
5	70	52	30	3	DP - A 5	DP - A 5 / V2A	
6	86	66	30	3	DP - A 6	DP - A 6 / V2A	
7	118	93	30	3	DP - A 7	DP - A 7 / V2A	
8	144	120	30	3	DP - A 8	DP - A 8 / V2A	



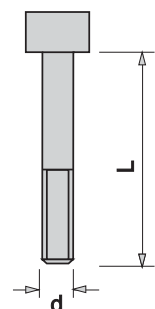
Hexagon Head Bolt				AS - A		( for Use with Cover plate - DP )		DIN - 931	
-------------------	--	--	--	--------	--	-----------------------------------	--	-----------	--

Group	Dimension d x L	Designation - Zn	Designation - INOX
0	M 6 x 30	AS - A 0	AS - A 0 / V2A
1	M 6 x 30	AS - A 1	AS - A 1 / V2A
2	M 6 x 35	AS - A 2	AS - A 2 / V2A
3	M 6 x 40	AS - A 3	AS - A 3 / V2A
4	M 6 x 45	AS - A 4	AS - A 4 / V2A
5	M 6 x 60	AS - A 5	AS - A 5 / V2A
6	M 6 x 70	AS - A 6	AS - A 6 / V2A
7	M 8 x 100	AS - A 7	AS - A 7 / V2A
8	M 8 x 10	AS - A 8	AS - A 8 / V2A



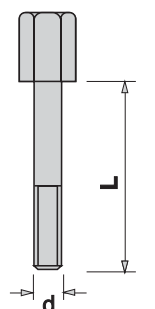
Socket Cap Screw				ISI - A		( for Use without Cover plate - DP )		DIN - 912	
------------------	--	--	--	---------	--	--------------------------------------	--	-----------	--

Group	Dimension d x L	Designation - Zn	Designation - INOX
0	M 6 x 20	ISI - A 0	ISI - A 0 / V2A
1	M 6 x 20	ISI - A 1	ISI - A 1 / V2A
2	M 6 x 25	ISI - A 2	ISI - A 2 / V2A
3	M 6 x 30	ISI - A 3	ISI - A 3 / V2A
4	M 6 x 35	ISI - A 4	ISI - A 4 / V2A
5	M 6 x 50	ISI - A 5	ISI - A 5 / V2A
6	M 6 x 60	ISI - A 6	ISI - A 6 / V2A
7	M 8 x 85	ISI - A 7	ISI - A 7 / V2A
8	M 8 x 115	ISI - A 8	ISI - A 8 / V2A



Stocking Bolt				AF - A	
---------------	--	--	--	--------	--

Group	Dimension d x L	Designation - Zn	Designation - INOX
0	M 6 x 20	AF - A 0	AF - A 0 / V2A
1	M 6 x 20	AF - A 1	AF - A 1 / V2A
2	M 6 x 25	AF - A 2	AF - A 2 / V2A
3	M 6 x 30	AF - A 3	AF - A 3 / V2A
4	M 6 x 35	AF - A 4	AF - A 4 / V2A
5	M 6 x 50	AF - A 5	AF - A 5 / V2A
6	M 6 x 60	AF - A 6	AF - A 6 / V2A
7	M 8 x 85	AF - A 7	AF - A 7 / V2A
8	M 8 x 115	AF - A 8	AF - A 8 / V2A



MATERIAL	
Fe	Raw - black
Zn	Zinc
Inox	Stainless steel
V2A	1.4401 (AISI 316)
V4A	1.4301 (AISI 304)